



**ROYAL LEE THE TERMINAL**  
**PHUKET**



“Experience the Elegance of a Brand-New Lifestyle.”

## INFORMATION ABOUT THE PROJECT

# Royal Lee Phuket

**DEVELOPER:**

Phuket Sirinath Co., Ltd

**TYPE:**

Comfort condominium near Sirinath National Park

**UNIT TYPE:**

Studio, 1 bedroom and 2 bedrooms

**SINKING FUND:**

500 THB per sq. m

**OWNERSHIP TYPE:**

Leasehold, Freehold

**MAINTENANCE FEE:**

40 THB/month per sq. m

**LOCATION:**

250 m from Nai Yang beach



THE CONDOMINIUM IS COMPLETED  
AND READY-TO-MOVE IN

# TYPE A1

## ROOM TYPES

31.30 – 31.40 m<sup>2</sup>

-  1 - BEDROOM
-  1 - BATHROOMS
-  1 - LIVING ROOM
-  1 - KITCHEN



TYPE A1



# TYPE A2

## ROOM TYPES

34.85 – 36.65 m<sup>2</sup>

-  1 - BEDROOM
-  1 - BATHROOMS
-  1 - LIVING ROOM
-  1 - KITCHEN



TYPE A2

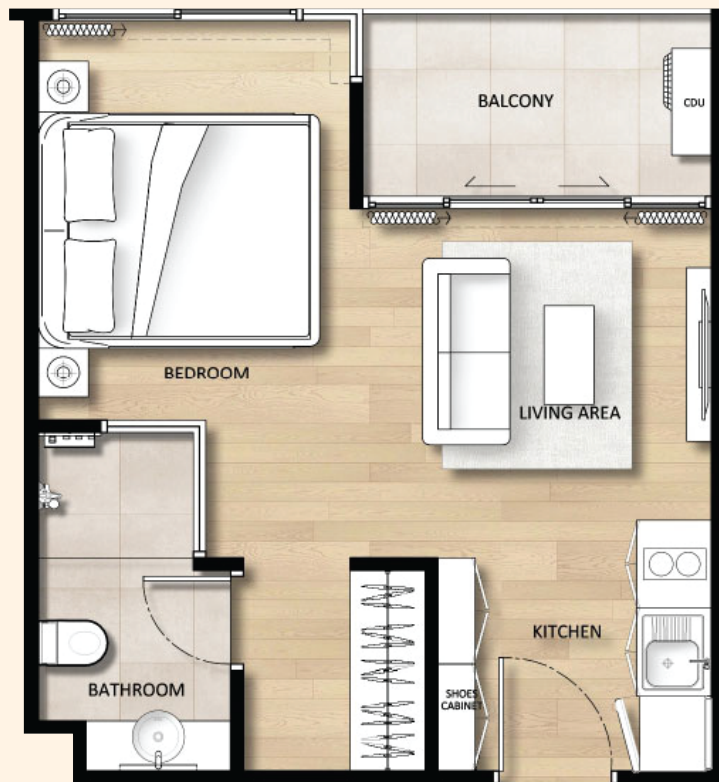


# TYPE A3

## ROOM TYPES

37.25 – 37.55 m<sup>2</sup>

-  1 - BEDROOM
-  1 - BATHROOMS
-  1 - LIVING ROOM
-  1 - KITCHEN



TYPE A3



# TYPE B1

## ROOM TYPES

66.45 – 66.65 m<sup>2</sup>

-  2 - BEDROOM
-  2 - BATHROOMS
-  1 - LIVING ROOM
-  1 - KITCHEN



TYPE B1



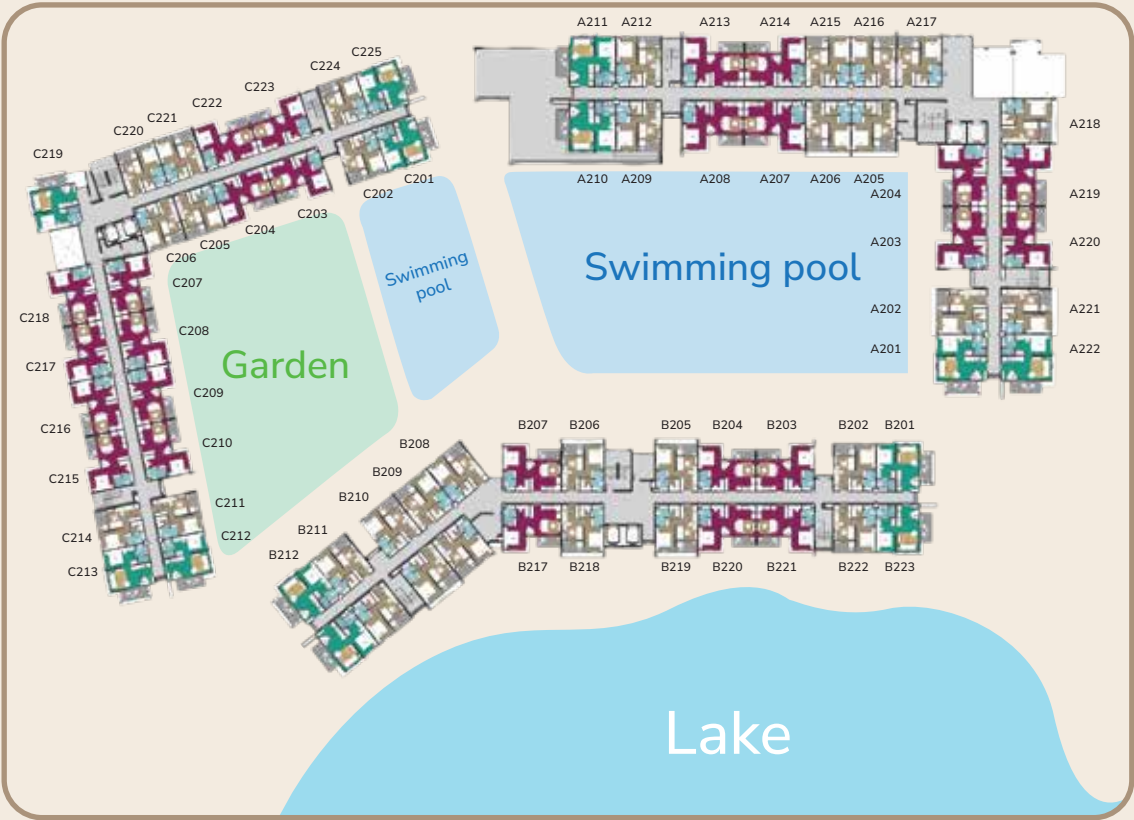
# MASTER PLAN



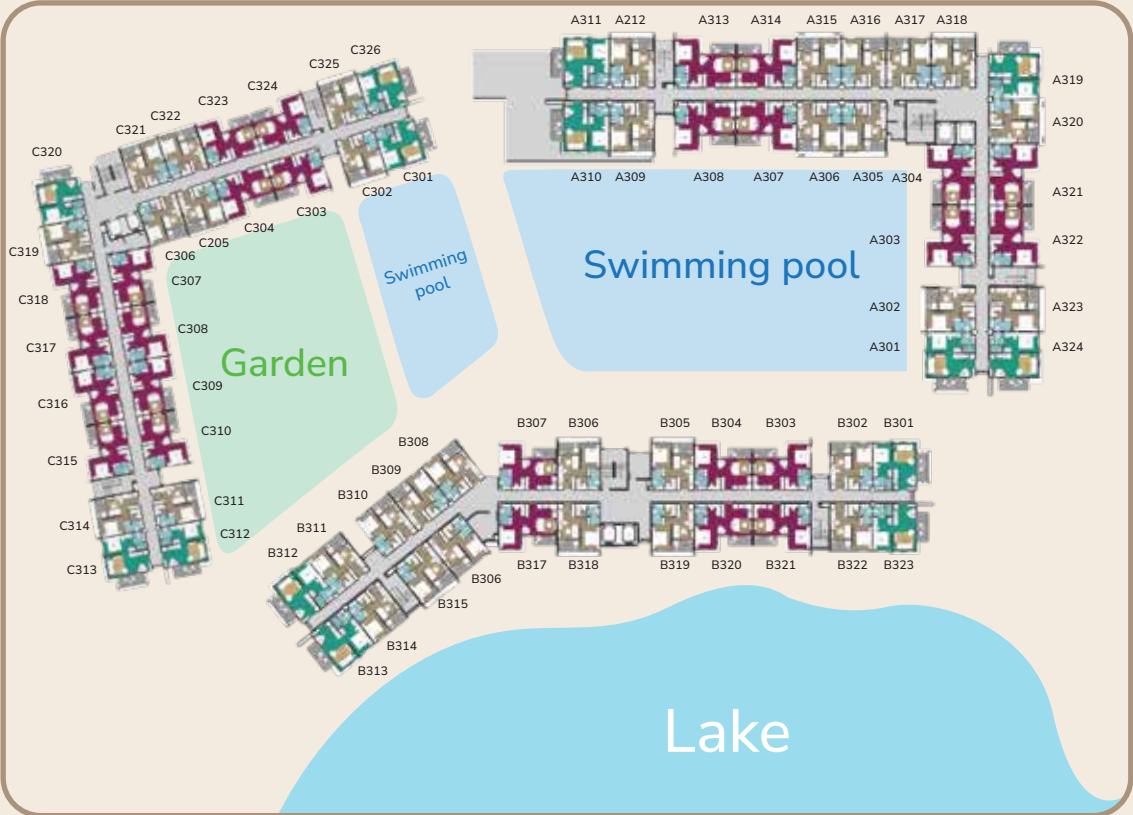
# FLOOR PLAN 1st floor



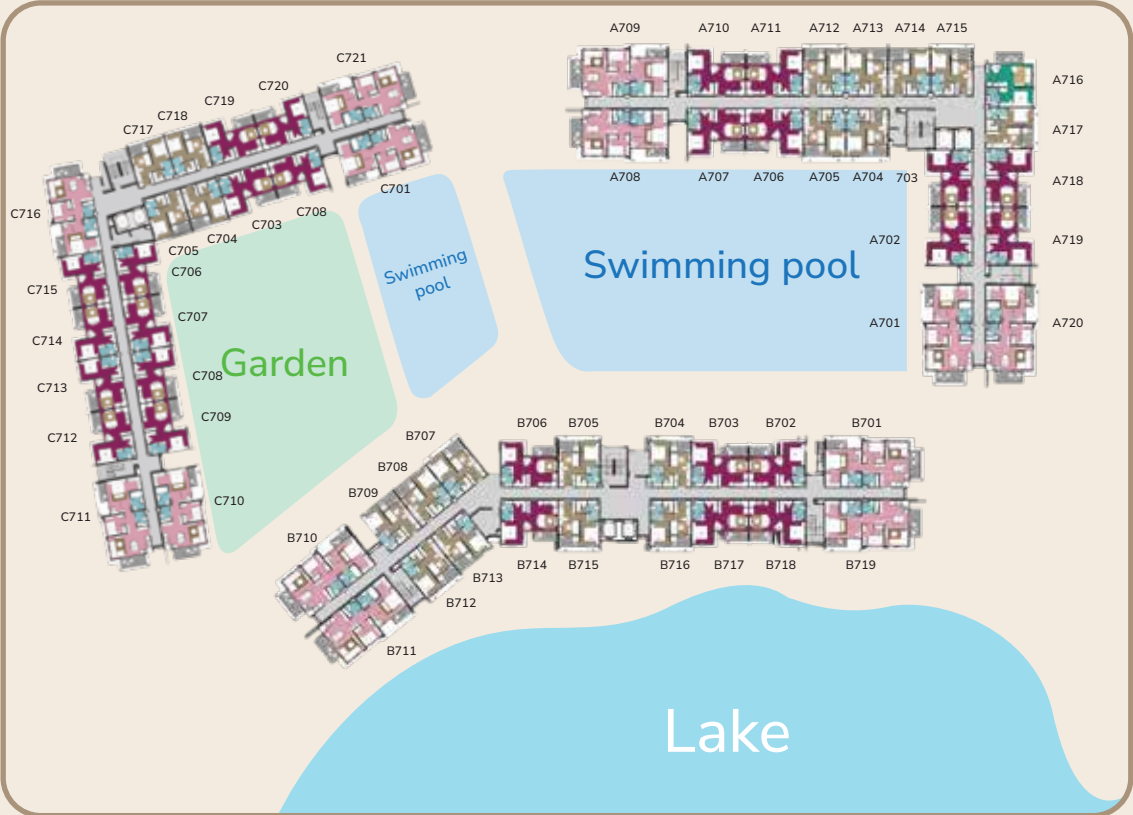
# FLOOR PLAN 2nd floor



# FLOOR PLAN 3-6th floor



# FLOOR PLAN 7-8th floor



# FACILITIES

-  Playground
-  Laundry
-  Minimarket
-  Coffeeshop

Coming soon

 Shopping Mall

FITNESS



EV CHARGER



# FACILITIES

---

RESTAURANT



SHUTTLE BUS



SWIMMING POOL



BICYCLE



# MASTER PLAN



COMING SOON

PROJECT:  
COMMUNITY MALL





ROYAL LEE  
THE TERMINAL PHUKET



# COMMUNITY MALL



COMMUNITY MALL



# COMMUNITY MALL



# LOCATION

## ENTERTAINMENTS:

- |                                 |        |
|---------------------------------|--------|
| 1. Blue Canyon Phuket Golf Club | 3 min  |
| 2. Aquapark Splash Jungle       | 14 min |
| 3. Sports center Thanyapura     | 15 min |
| 4. Horse club                   | 25 min |
| 5. Blue Tree Phuket             | 30 min |

## INTERNATIONAL SCHOOLS:

- |                                   |        |
|-----------------------------------|--------|
| 6. UWC International School       | 15 min |
| 7. HeadStart International School | 28 min |
| 8. Kajonkiet International School | 30 min |
| 9. Finnway International School   | 33 min |
| 10. British International School  | 37 min |

## MALLS AND SUPERMARKETS:

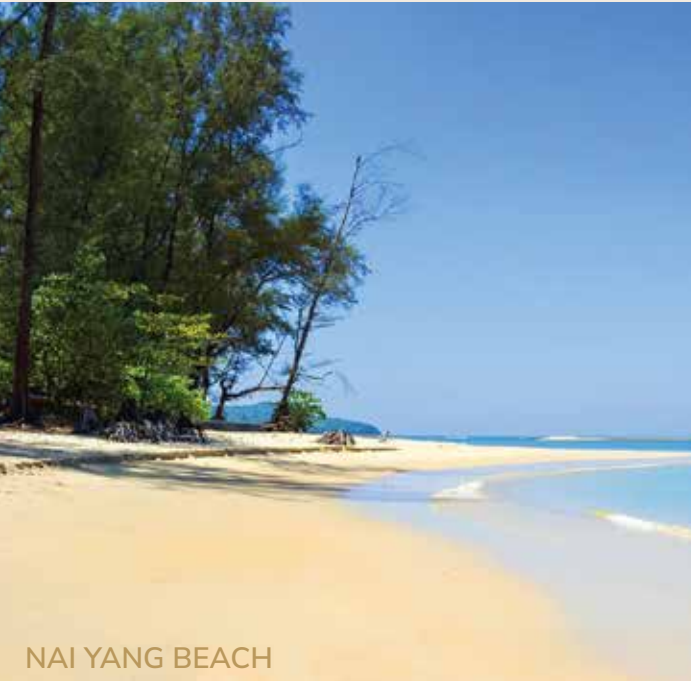
- |                     |        |
|---------------------|--------|
| 11. Lotus's Thalang | 19 min |
| 12. Makro Thalang   | 21 min |
| 13. Boat Avenue     | 25 min |
| 14. Villa Market    | 25 min |
| 15. Porto de Phuket | 26 min |

## HOSPITALS:

- |                                       |        |
|---------------------------------------|--------|
| 16. Bumrungrad International Hospital | 10 min |
| 17. Thalang Hospital                  | 18 min |
| 18. Bangkok Hospital                  | 45 min |



BRAND-NEW CONDOMINIUM **ONLY 500 M.**  
**FROM THE AIRPORT AND NAI YANG BEACH**





BLUE CANYON PHUKET GOLF CLUB 7 KM



BUMRUNGRAD  
INTERNATIONAL HOSPITAL PHUKET 7 KM

# ROYAL LEE GROUP

Founded in 1990, the Royal Lee group of companies is a powerful conglomerate that unites 12 subsidiaries in various industries: education, medicine, television, engineering, real estate, construction and others.



湛江市寸金培才學校  
ZHANJIANG CUNJIN PEICAI SCHOOL



MANDARIN  
INTERNATIONAL SCHOOL  
MASTERY • INTEGRITY • SUCCESS



中国海螺创业控股(泰国)有限公司  
CONCH ENVIRONMENTAL ENGINEERING (THAILAND) CO.,LTD



ROYAL LEE  
THE TERMINAL PHUKET



## Royal Lee Phuket

131 Moo. 1, Sakhu,Thalang, Phuket, Thailand. 83110

Sale Office: +66 92-269-0728

[info@royalleephuketth.com](mailto:info@royalleephuketth.com) [www.royalleephuketth.com](http://www.royalleephuketth.com)